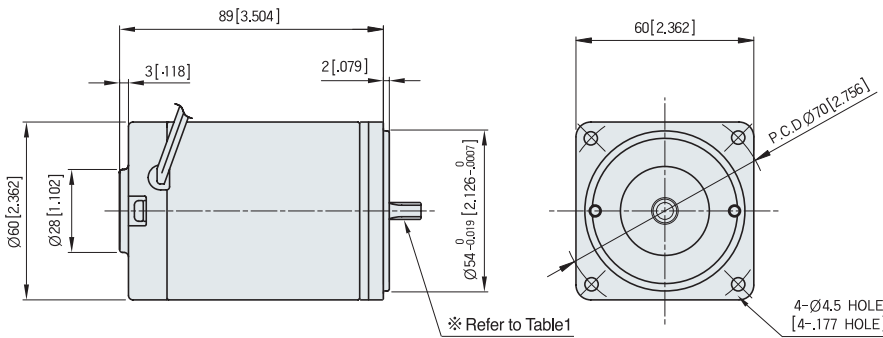




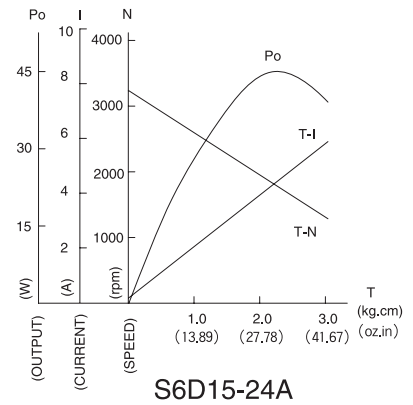
STANDARD TYPE S6D SERIES [15W]

MOTOR DIMENSION

UNIT : mm[inch]



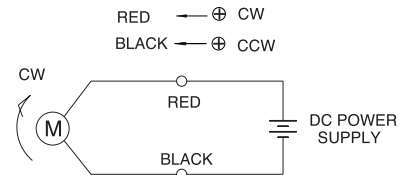
CHARACTERISTIC CURVE



▼ SPEC for output shaft of motor-(Table 1)

MODEL	GEARED TYPE	STRAIGHT TYPE	D-CUT TYPE
	S6D15-□A	S6D15-□S	S6D15-□D
TYPE OF OUTPUT SHAFT			

CIRCUIT DIAGRAM



The direction of motor rotation is as viewed from the front shaft end of the motor

MOTOR SPECIFICATION

(Voltage : DC 24V)

Type	Voltage V	Output W	No Load		At Rated Load			Run Duty Hr	Weight Kg	
			Speed RPM	Current(MAX.) A	Speed RPM	Torque	Current A			
S6D15-12□	12	15	3200	0.80	2950	0.049	N·m	2.00	2000	0.6
						6.9	oz·in			
						0.50	kgf·cm			
S6D15-24□	24	15	3300	0.40	3000	0.049	N·m	1.00	2000	0.6
						6.9	oz·in			
						0.50	kgf·cm			
S6D15-90□	90	15	3200	0.20	3000	0.049	N·m	0.30	2000	0.6
						6.9	oz·in			
						0.50	kgf·cm			

* Run duty is valued at rated Voltage and No load

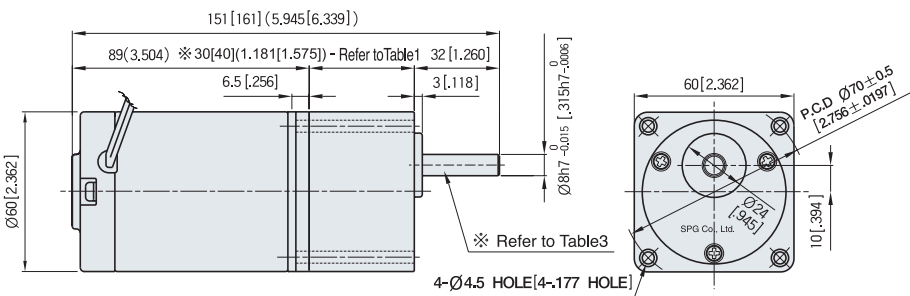
21C, for World geared motor!



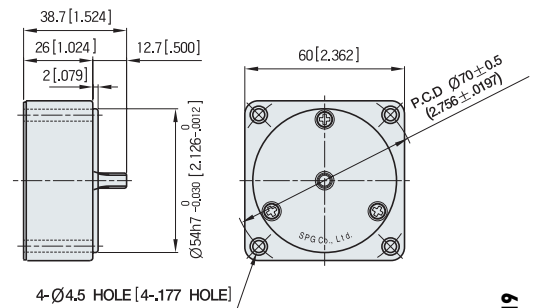
GEARED MOTOR SPECIFICATION

UNIT : mm[inch]

▼ **GEARED MOTOR** ※ MOTOR MODEL : S6D15-□A
 ※ HEAD MODEL : S6□A3□~S6□A250□



▼ **INTER-DECIMAL GEAR HEAD**
 ※ MODEL : S6GX10B



▼ ※30(40) – (Table1)

GEAR RATIO	SIZE:mm[inch]
S6 □ A3 □ ~ S6 □ A18 □	30 [1.181]
S6 □ A20 □ ~ S6 □ A250 □	40 [1.575]

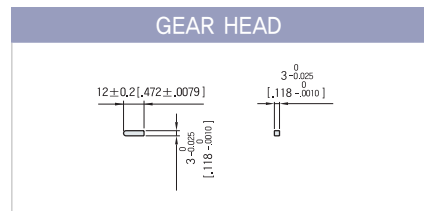
▼ **WEIGHT** – (Table2)

PART		WEIGHT:kg[oz]
MOTOR		0.9(31.7)
DECIMAL GEAR HEAD		0.18(6.3)
GEAR HEAD	S6 □ A3 □ ~ S6 □ A18 □	0.24(8.5)
	S6 □ A20 □ ~ S6 □ A40 □	0.30(10.6)
	S6 □ A50 □ ~ S6 □ A250 □	0.33(11.6)

▼ **SPEC for output shaft of gearhead**–(Table3)

MODEL	TYPES OF OUTPUT SHAFT
S6SA3 □ ~ S6SA250 □	STRAIGHT TYPE
S6DA3 □ ~ S6DA250 □	D-CUT TYPE
S6KA3 □ ~ S6KA250 □	KEY TYPE

▼ **KEY SPEC**



GEAR HEAD RATED LOAD

S6D15-24A

MODEL	GEAR RATIO	3	3.6	5	6	7.5	9	10	12.5	15	18	20	25	30	36	40	50	60	75	90	100	120	150	180	200	250
	No Load rpm		1100	917	660	550	440	367	330	264	220	183	165	132	110	92	83	66	55	44	37	33	28	22	18	17
S6DA□B	N-m	0.12	0.14	0.20	0.24	0.30	0.36	0.40	0.50	0.60	0.71	0.71	0.89	1.07	1.29	1.43	1.61	1.93	2.41	2.89	2.94	2.94	2.94	2.94	2.94	2.94
	oz-in	16.9	20.2	28.1	33.7	42.2	50.6	56.2	70.3	84.3	101.2	101.2	126.5	151.7	182.1	202.3	227.6	273.1	341.4	409.7	416.3	416.3	416.3	416.3	416.3	416.3
	kgf·cm	1.2	1.5	2.0	2.4	3.0	3.6	4.1	5.1	6.1	7.3	7.3	9.1	10.9	13.1	14.6	16.4	19.7	24.6	29.5	30.0	30.0	30.0	30.0	30.0	30.0

- The code in □ of gearhead model is for gear ratio
- It is the permissible torque of the assembled motor and gearhead
 The permissible torque of the combination of the regular gearhead and the inter-decimal gearhead is 30kgf·cm.
- □ color indicates that the output shaft of the geared motor rotates in the same direction as the output shaft of the motor.
 Others indicate rotation in the opposite direction.
- No Load rpm equals Motor no load rpm divided by gear ratio. The actual rotation speed is less 2-20% than the displayed value according to the load
- There is no marked the 'L' code for it is an exclusive use.